

**Management Information:
Key to Strategic Planning**

Senior Leadership Retreat

presented by: Amy Edwards
Division of Management Information (DMI)
www.dmi.illinois.edu

OFFICE of the PROVOST | UNIVERSITY OF ILLINOIS AT URBANA-CHAMPAIGN

How can DMI help you?

- With standard web & paper reports
- With custom reports
- With advice on where to find and how to use management data

OFFICE of the PROVOST | UNIVERSITY OF ILLINOIS AT URBANA-CHAMPAIGN

Why be data-savvy?

- To better manage your unit
- To know what others know about you
- To respond to inquiries
- To avoid reinventing the wheel

OFFICE of the PROVOST | UNIVERSITY OF ILLINOIS AT URBANA-CHAMPAIGN

Set a bookmark today:

dmi.illinois.edu

<http://www.dmi.illinois.edu>

The screenshot displays the Division of Management Information website. At the top, there is a navigation menu with links for Home, Current Profile, Faculty & Support, Dashboard, Plans, Research, and Resources. Below the navigation is a line graph titled 'Student Enrollment 1970 - Today'. The graph shows three lines: Undergraduate (red), Graduate (blue), and Total (green). The Y-axis represents enrollment from 0 to 40,000. The X-axis represents years from 1970 to 2014. The Undergraduate enrollment shows a significant upward trend, reaching approximately 35,000 by 2014. Graduate enrollment shows a more gradual increase, reaching about 10,000. The Total enrollment follows the Undergraduate trend, reaching about 45,000. Below the graph, there are three columns of content: 'NEWS & UPDATES' with recent news items, 'DMI SYSTEMS (LOGIN REQUIRED)' with links to various systems like Faculty, Registrar, and Finance, and 'PUBLIC INFORMATION LINKS' with links to Student Enrollment, Campus Profile, and Department Information.

UIUC Campus Profile

Ten years of data summarized by department, college and campus:

- Budgets & expenditures
- FTE and headcount staff
- Student enrollment
- Course enrollments & IUs
- much, much more!

UIUC Campus Profile -- Uses

- Compare your unit to similar units on campus
- Look at your unit over time



UIUC Campus Profile Types of Profiles Available

- Standard: Approximately 400 items
- Strategic:
 - Campus-wide metrics
 - College/Unit-specific metrics
 - Dashboards
- Custom: Over 600 items



Standard Profile

Division of Management Information | University of Illinois at Urbana-Champaign | 2014-2015 Campus Profile - Campus Total

Profile Type: Standard | Strategic | Custom

Select a Major Unit | Select a Department | Jump to data | Change year | Reverse Year Order | Reset all

Item (numbers link to glossary)	2014-2015	2013-2014	2012-2013	2011-2012	2010-2011	2009-2010	2008-2009	2007-2008	2006-2007	2005-2006
1000 Faculty and Staff -----	7047.43	6990.09	6816.95	6583.24	6604.27	7127.23	7191.09	6919.91	6932.92	6647.32
1001 FTE Acad on State/Fund	4397.92	4243.56	4095.72	4072.90	4125.20	4303.80	4272.71	4113.42	4071.01	3843.34
1002 FTE Academic Staff - St/Tu	1679.73	1643.58	1609.60	1621.77	1603.64	1696.89	2027.13	2031.69	2010.74	1879.13
1040 FTE Professors - St/Tu	787.43	801.20	783.92	787.14	825.18	835.30	830.97	831.57	840.14	834.02
1041 FTE Assoc Prof - St/Tu	814.09	801.84	816.27	812.97	811.84	800.94	801.34	809.83	805.29	802.29
1042 FTE Ass Prof - St/Tu	631.67	620.17	599.40	607.84	601.87	601.14	613.21	644.30	647.51	639.00
1100 FTE Via Faculty - St/Tu	12.74	13.84	14.07	17.01	16.24	15.90	15.91	16.06	16.81	14.81
1110 FTE Post Doc - St/Tu	52.29	49.34	43.24	38.28	35.72	31.05	29.23	27.78	32.47	28.91
1120 FTE Other Inst - St/Tu	855.79	869.19	436.57	372.07	370.77	384.24	397.45	333.20	320.90	297.43
1204 FTE Clinical Res - Tu	21.44	22.02	16.13	13.44	12.42	13.19	11.42	11.44	11.70	22.43
1240 FTE Academic Prof-St/Tu	1687.43	1622.84	1722.11	1749.82	1742.82	1833.94	1875.02	1874.62	1851.82	1647.87

- Item numbers are links to glossary
- Some data items are “drilldowns”



Campus Profile Drilldowns

Any data item that appears to be a link is drillable

- FTE: get staff lists with appointment info
- Expenditures: see details by fund and account
- Students/degrees: counts by student program, breakouts by gender, race/ethnic, residency
- IUs: breakout by section

Details by Program for Students listed for *Campus Profile* Item 3600 for unit 1B1-KV-KV0-257

[Glossary](#)

Dept	Program (collcurr)	Degree	Major (curriculum name)	Concentration	Total	By Gender		By Residency		By Time		African American		A	
						M	F	IL Res	Non Res	Part	Full	All	M	F	Am
1-257	10KV0439BALA	BALAS	Mathematics		1	0	1	1	0	0	1	0	0	0	0
1-257	10KV0439BSLA	BSLAS	Mathematics		320	184	136	289	31	4	316	13	7	6	43
1-257	10KV0461BSLA	BSLAS	Actuarial Science		245	166	79	200	45	3	242	6	3	3	37
1-257	10KV1438BSLA	BSLAS	Math & Computer Science		125	114	10	99	26	5	120	4	2	2	19
1-257	10KV3896BSLA	BSLAS	Mathematics	Graduate Preparation	1	1	0	1	0	0	1	0	0	0	0
1-257	10KV3897BSLA	BSLAS	Mathematics	Mathematics Teaching Option	26	11	15	26	0	0	26	0	0	0	2
1-257	10KV8037BSLA	BSLAS	Actuarial Science		4	1	3	3	1	0	4	0	0	0	1

OFFICE of the PROVOST | UNIVERSITY of ILLINOIS at URBANA-CHAMPAIGN

Custom Profile

Division of Management Information
University of Illinois at Urbana-Champaign

2014-2015 Campus Profile - Campus Total

[Home](#) | [Glossary](#) | [Help](#) | [What's New?](#) | [About](#) | [Suspension Links](#)

Profile Type: [Standard](#) | [Strategic](#) | [Custom](#)

Select the units, items (rows), and column order desired and then hit the Submit button above

1. Select unit(s)

- All units, depts, colleges
- All academic college-level units
- Undergraduate Colleges
- Units with strategic indicators
- General, etc.
- Academic Units Total
- 1000 FTE Academic Staff-StuTul8
- 1000 FTE Academic Staff-StuTul8
- 1000 FTE Academic Staff-StuTul8
- ACES Admin
- ACES courses
- ACES General

Select Units

- Campus Total
- Agricultural, Cons. & Env Sci

2. Select item(s)

- All items
- Standard Profile Items, depts, colleges
- Strategic Indicators
- 1000 Faculty and Staff
- 1000 FTE staff on State/TulFunds
- 1000 FTE Academic Staff-StuTul8
- 1000 FTE Academic Staff-StuTul8
- 1000 FTE Academic Staff-StuTul8
- 1000 FTE Assoc Prof-StuTul8
- 1000 FTE Assoc Prof-StuTul8

Select Items

- FTE Professors-StuTul8
- FTE Assoc Prof-StuTul8
- FTE Asst Prof-StuTul8

3. Select Column Order

- Ascending year

Submit

OFFICE of the PROVOST | UNIVERSITY of ILLINOIS at URBANA-CHAMPAIGN

Strategic Profiles

- Campus-wide set of metrics organized by campus goals
- College-specific goals, metrics for each goal, and targets for each metric
- Charts available for many metrics

Strategic Profiles – Campus-Wide Metrics

Metrics that are the same for all units

- Students
- Faculty
- Programs

Selected items are graphed on Dashboard

Strategic Profiles - Campus-Wide Metrics

Division of Management Information | University of Illinois at Urbana-Champaign

2014-2015 Campus Profile - Campus Total

Home | Glossary | Help | What's New | About | **Dashboard**

Home | Dashboard | **Strategic Profiles** | Settings

Select Line: [] | Jump to charts | Change year: [] | Reset All

Campus Profile for 2014-2015

Unit: Campus Total

Item Numbers (see to glossary)	2005	2006	2006-2007	2007	2008	2008-2009	2009	2010	2010-2011	2011	2012	2012-2013	2013	2014	2014-2015	2015 Target
1. Foster scholarship, discovery and innovation																
1403 Tenure Pay/Fac Headcount	2143	2093	2100	2194	2041	1943	1871	1556	1893	1851	1950					
1402 Ten Pay Faculty & Indept	7.9	8.1	8.0	8.2	8.5	10.2	10.4	10.9	11.0	11.0	11.0					
1772 Sponsored Research	4000	31463	30495	32387	35763	38945	39501	42304	34040	41634						450000
1773 Sponsored Resrch 4000/Fac FTE	154	149	157	173	180	204	200	294	222							243
1402 Research & Develgn Exp (0000)					81313	84849	88374	76347								700000
1732 Startups	8	7	6	8	6	12	8	6	6							0
1732 Royalty revenue-millions	4.59	4.69	4.24	5.12	6.13	6.14	6.14	4.91	5.24							7.00
1739 # corps of active contracts																439
1738 # active contracts w/ corps																1092
2. Provide transformative learning experiences																
1402 Four-year graduation rate			83.5	84.7	87.3	85.9	85.9	89.2	89.1							70.0
1402 Six-year graduation rate		81.7	81.5	82.0	82.4	82.3	82.4	83.9	82.7							84.9
1403 4 yr Grad rate: underrep			42.2	43.7	52.4	44.8	52.3	61.9	54.9							59.0
1403 4 yr Grad rate: overrep			84.9	87.7	89.7	89.9	74.6	70.1	71.7							78.0
1402 Transfer graduation rate			66.9	61.3	64.0	66.0	64.2	64.2	62.4							64.9
1413 Freshman Retention Rate (%)		93.4	92.4	92.3	93.7	93.0	93.7	92.7	93.0							93.5

OFFICE of the PROVOST | UNIVERSITY OF ILLINOIS AT URBANA-CHAMPAIGN

Strategic Profile – Unit-Specific Metrics

- Organized by goals
- Targets set by the unit
- Primarily college and major unit only, can be extended to depts



Strategic Profile – Unit-Specific Metrics

Division of Management Information
University of Illinois at Urbana-Champaign

2014-2015 Campus Profile - Agricultural, Cons. & Env Sci

Home | Summary | Help | Other's home | Contact | Log out

Home Type | Summary | Strategic | Contact

Aggricultural, Cons. & Env Sci | [Jump to charts](#) | [Change year](#) | [Reset all](#)

Campus Profile for 2014-2015

Item numbers link to glossary

1. Enable first-class discovery research that is purposefully translated into practice

	2005-2006	2006-2007	2007-2008	2008-2009	2009-2010	2010-2011	2011-2012	2012-2013	2013-2014	2014-2015	2015 target
1.01 Tenure Sys Fac Headcount	229	221	219	220	214	202	192	185	181	174	170
1.02 FTE Tenure Faculty/Fellows	229,480	222,351	219,791	222,719	218,401	207,239	199,112	194,401	189,977	183,901	179,100
1.11 SAC Federal Exp (000)	14662	14613	14509	14483	14017	14054	13981	13901	13540	13000	12800
1.12 SAC Illinois Exp (000)	10299	10771	10985	10300	10604	9924	9909	9885	9846	9800	9800
1.13 SAC Prov & Other Exp(000)	7070	7621	7784	8029	10487	11494	11774	12079	12422	12800	12800
1.21 Land Grant App Exp(000)	18954	18124	20124	17648	15889	14422	13612	14789	14774	15000	15000
1.22 SAC Exp - FF home apps(000)	21571	20126	20201	20181	20712	20289	20462	20366	20322	20300	20300
1.23 FF SAC exp/fac FTE	17785	17043	17041	16459	16474	16407	16296	16171	16174	16100	16100
1.24 Sponsored Research 4000 FTE	122	133	121	120	121	144	124	174	151	174	174
1.25 Sponsored Research 4000	20107	20493	20669	20764	20459	20124	19905	20276	20720	20800	20800
2. Prepare globally competitive undergraduate, graduate, and post-graduate students											
2.01 Opened Adviser/Faculty FTE	15.9	11.3	11.3	11.1	11.3	11.9	13.4	13.2	13.9	13.9	13.9
2.02 National Learning Transfers	151	159	172	167	147	112	148	149	144	170	168
2.03 Internal Learning Transfers	159	203	241	246	226	209	187	214	199	192	203
2.04 International grad	39.1	34.4	34.8	39.3	40.2	39.5	34.5	34.4	36.0	39.4	39.4
2.05 Graduate employees	55	48	49	39	44	43	45	49	41	42	42
2.06 Going to Grad/Post School	32	33	30	36	30	30	26	24	25	25	25
2.07 Average salary, \$0 graduates	3527	3820	3945	4140	3720	4122	3941	4028	4432	4432	4432

OFFICE of the PROVOST | UNIVERSITY OF ILLINOIS AT URBANA-CHAMPAIGN

Strategic Profile - Three Chart Types

Division of Management Information
University of Illinois at Urbana-Champaign

2014-2015 Campus Profile - Campus Total

Home | Summary | Help | Other's home | Contact | Log out

Home Type | Summary | Strategic | Contact

Campus Total | [Jump to charts](#) | [Change year](#) | [Reset all](#)

Campus Profile for 2014-2015

Item numbers link to glossary

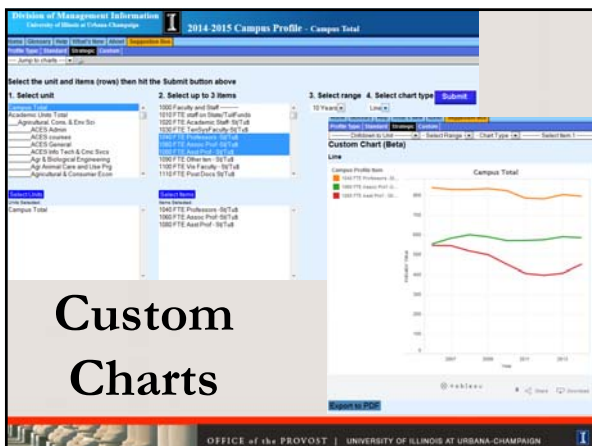
1. Foster scholarship, discovery and innovation

	2007-2008	2008-2009	2009-2010	2010-2011	2011-2012	2012-2013	2013-2014	2014-2015	2015 target	
1.01 Tenure Sys Fac Headcount	2145	2083	2100	2196	2041	1943	1871	1856	1831	1850
1.02 Ten Sys Faculty & Thrup	7.3	6.1	6.0	6.2	6.5	10.2	10.4	10.9	11.1	11.0
1.11 Sponsored Research 4000	214863	204893	223887	257432	248745	299311	429044	540470	416934	480000
1.12 Sponsored Research 4000/Fac FTE	136	149	157	173	180	204	230	294	222	240
1.20 Research & Program Exp(000)				515213	545669	587784	743497			700000
1.21 Postgrads	5	7	6	4	6	12	5	6	6	6
1.22 Royalty revenue-millions	4.59	4.45	4.24	5.12	6.13	6.38	6.14	4.91	5.28	7.00
1.23 # active contracts								439	404	404
1.24 # active contracts w/ scope								1092	1104	1104
2. Provide transformative learning experiences										
2.01 Four-year graduation rate	83.5	84.7	84.7	87.3	85.9	85.3	85.2	84.1	84.1	84.1
2.02 Six-year graduation rate	91.7	91.5	92.0	92.4	92.4	92.4	91.9	92.7	92.1	92.0
2.03 4 yr Grad rate: underrep	42.2	41.7	41.7	42.4	44.8	42.3	41.9	44.9	44.9	44.9
2.04 4 yr Grad rate: overrep	84.0	87.7	87.1	86.9	74.6	70.1	71.7	75.7	77.2	75.0
2.05 Transfer graduation rate	61.9	61.3	61.3	61.0	61.1	61.2	61.4	61.1	61.1	61.0
2.06 Freshman Retention Rate (%)	93.4	92.4	93.0	93.7	93.0	93.7	92.7	92.8	93.1	93.5

OFFICE of the PROVOST | UNIVERSITY OF ILLINOIS AT URBANA-CHAMPAIGN







Course Information System

- Sections, IUs, Instructors by
 - “Offering” department
 - “Paying” department
 - “Controlling” department
- Data back to Fall 1987
- Deals correctly with renumberings, crosslistings, new subject names



Course Information System Example Reports

- All courses one year
- All years for one course
- Selected courses and selected terms
- All courses, all years for one faculty member
- Six – Ten reports
- Anomaly reports



Other Information Resources for Managing the Instructional Mission

- Student Enrollment Reports
“Official” 10-day Enrollments
- Consolidated Class Rosters
- Section Instructor List/Dept Rosters



Information Resources for Managing your Students & Tuition Revenue

Tuition, Waiver and Appointments System

Tuition charges and waivers for undergraduate & graduate students enrolled in your unit by term.

Includes residency, tuition schedule, range for each student, plus all waiver-generating appointments



Who's Who at the UI: Departments and Executive Officers

- All departments in Urbana
- Unit heads & other contacts
- Staff directories
- URLs of each unit



Information Resources for Managing the Research Mission

Proposal Data System

All proposals submitted for grants/contracts


1996 to present. Searchable by:

- Investigator -Sponsor/agency
- Dept or college -Keyword




Academic Analytics

- Online Faculty Scholarly Productivity Tool
- Provides comparative data for research universities
- Organized according to the National Center for Educational Statistics (NCES) Classification of Instructional Programs (CIP).
- Comparisons are available for broad taxonomy level, program level, department level and university level.




AA FSPI & Weights

- Faculty Scholarly Productivity Index (FSPI) z-score was developed to facilitate broader comparisons across disciplines and universities.
- For each discipline, weights are assigned to each variable and variable family. A variable is excluded if it is not part of normal research activity for a discipline.



AA Activities

- Areas of research activity
 - book publications
 - journal article publications
 - journal article citations
 - conference proceedings
 - federal grants
 - professional honors and awards



AA Sources

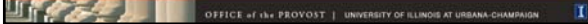
- Example sources include, but are not limited to,
 - CrossRef
 - National Science Foundation
 - U.S. Department of Education
 - National Endowment for the Humanities
 - U.S. Department of Agriculture
 - Department of Energy



AA Timeframe

The 2013 database includes the following data

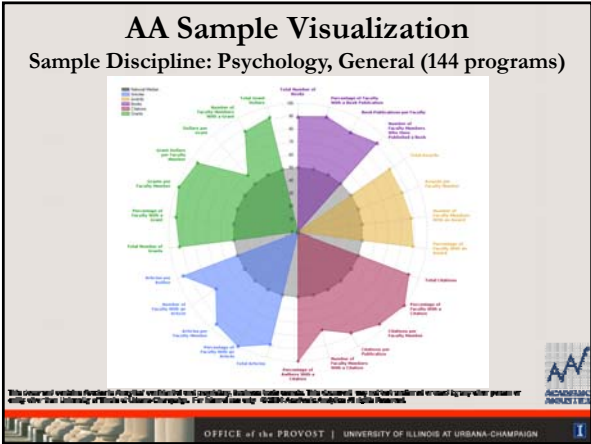
- Faculty: Academic Year 2013-2014
- Journal Articles: 2010 - 2013
- Citations: 2009 - 2013
- Conference Proceedings: 2010 - 2013
- Books: 2004 - 2013
- Grants: 2009 - 2013
- Awards: No Limit

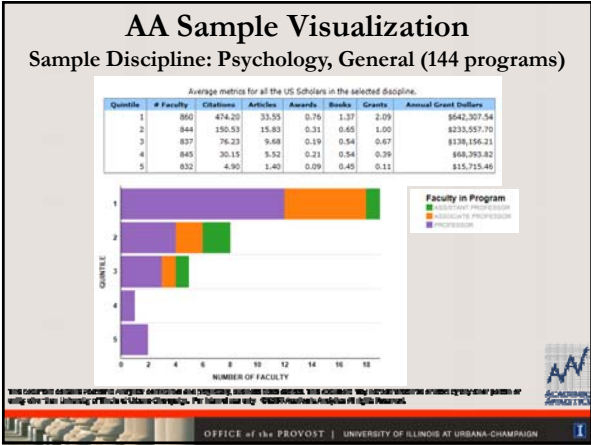


AA Comparisons

- Select peers and variables for comparison purposes.
- Peers may be selected manually or by Institution Criteria
 - Sector, Region, State, AA Classification, Carnegie Classification, AAU Member Status and Land Grant Institution
- Raw data and visual representation of the data may be viewed online or downloaded into Excel or PDF.







- ### AA Faculty List
- Faculty lists by doctoral program and department are generated by DMI and verified by units.
 - Lists include tenure-system and emeritus faculty who hold appointments, including zero-percent appointments, as of October 15.
 - Faculty listed in two programs would be counted in each program but would be counted only once at the aggregate level.
 - Included are academic departments and independent schools outside of colleges.
 - Excluded are schools within colleges, centers and institutes.
- OFFICE of the PROVOST | UNIVERSITY of ILLINOIS at URBANA-CHAMPAIGN

AA at Illinois

- Illinois currently has access to aggregate data
- AA provides faculty details on a person-by-person basis; however, Illinois' subscription does not include access to this data.
- Access is granted to individuals in academic leadership positions on our campus



Additional Information Resources for Managing Your Unit

- Course Information System:
 - Teaching Histories
- Activity Reporting System:
 - Salary Histories from FY89
 - Cost Sharing Commitments



Other Information Resources Available to Units

- Banner
- Decision Support:
 - Eddie/Business Objects
 - Standard reports
 - Point & click report generation
- Enterprise Data Warehouse (EDW)
 - for programmers



A Note on Data Quality

Garbage in → Garbage out

The data we work with originates in the departments. Please make sure your staff members know how important it is to verify the data are entered correctly.



A Note on Data Security

As EO, you are responsible for the uses of data in your unit. Make sure your staff know and obey the policies and laws on data privacy, especially with student data (FERPA).



Towards A Data-Driven Decision-Making Culture

More and more, decisions on campus are driven by data. Take the time to understand the sources of data you have available and use them !!!



Web Systems Available

- Activity Reporting System
- Campus Profile
- Course Information System
- Departments & Executive Officers
- Proposal Data System
- Section Instructor List
- Student Enrollment Reports
- Tuition Assessment/Waiver/ Appt Reports



Let DMI Help

Call (333-3551) or email (dmi@illinois.edu)

- Navigation through our site
- Understanding the data
- Where to find data
- Special reports needed



?? Questions ??